

Forenta

Morristown, TN U.S.A.

“SANDWICH” DOUBLE LEGGER

Model 491SLMC/SLMAC with K-601



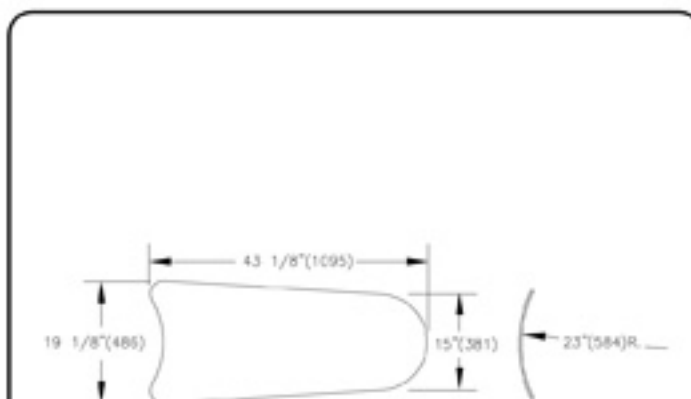
- Increases Production up to 50% without Sacrificing Quality
- Excellent Finish - Sharp Creases
- Finishes Both Pant Legs in One Lay
- Center Leaf Holds First Leg While Dressing Second Leg
- Center Leaf Designed to give Maximum Steam and Vacuum Flow
- Center Leaf easily Raises and Lowers; Held in Upward and Downward Position with a Spring
- Press Designed to also Finish other Garments
- K-602 Center Leaf Kit available for other "C" Series Leggers

Specifications

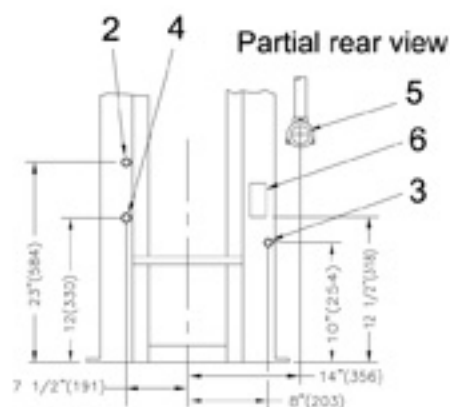
Model 491SLMAC

| | | |
|-------------------------------------|--|--|
| Electrical connections | | 491SLMAC |
| Voltage 120V 1PH 50/60Hz .5amps | | Standard |
| Voltage 230V 1PH 50/60Hz .25amps | | optional |
| Optional Iron Attachment: | | |
| Voltage 120V 1PH 50/60Hz | Wattage | 1000 |
| Approx. Consumption/hour | | 0.5 KWH |
| Steam and Air connection | | |
| Steam Inlet | NPT | 1/2" |
| Steam Outlet | NPT | 1/2" |
| Rec. steam pressure | PSIG kPa | 75-85 517-586 |
| Steam consumption @ 80psig(552 kPa) | BHP kg/hr lb/hr | 1.5 23.5 51.8 |
| Compressed air | NPT | 3/8" |
| Air consumption | free air/cycle at 80psig free air/cycle at 552kPa | 0.32 FT ³ .009m ³ |
| Rec. air pressure | PSIG kPa | 80 552 |
| Air Vacuum Connection | NPT | 1 1/4" |
| Weight (crated) | | |
| Shipping | lbs kg | 990 449 |

- | | |
|------------------------|---------------------------|
| 1 Control Push Buttons | 4 Steam Outlet connection |
| 2 Steam connection | 5 Air Vacuum Connection |
| 3 Air connection | 6 Electrical Connection |

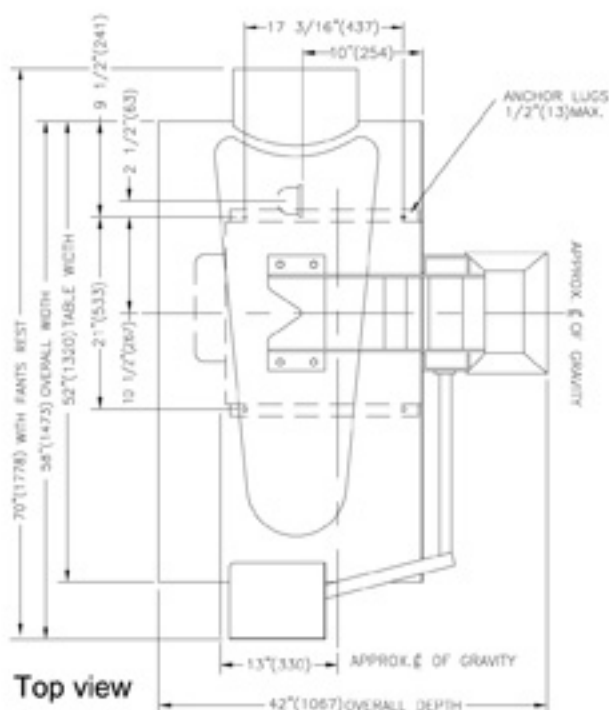


491 Buck Dimensions

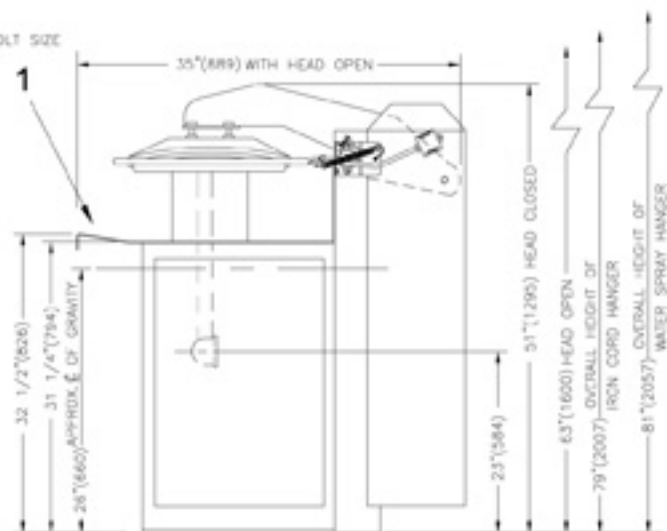


Detail Line Drawing

(millimeters shown in parentheses)



Top view



Right side view