

# Forenta

Morristown, TN U.S.A.

## Pants Topper

Models 22PT, 222BTAC

- Automatic Waist Expander
- Finishes Sizes 22" to 48" Pants
- Oval Pleat Shoes and Clear Buck for Operator Dressing
- Heated Buck, More Steam Penetration for Better Finishing
- Automatic Cycle, Simple, Easy Operation
- FORENTA Pants System Produces 40-50 Pants per Hour



222BTAC



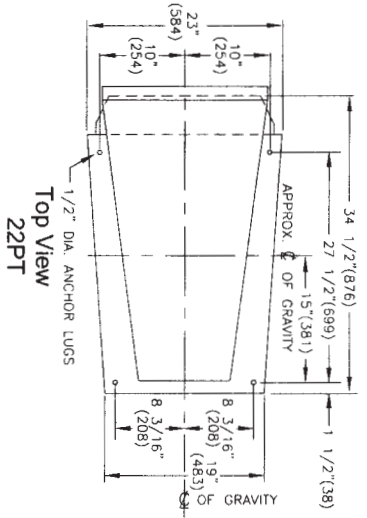
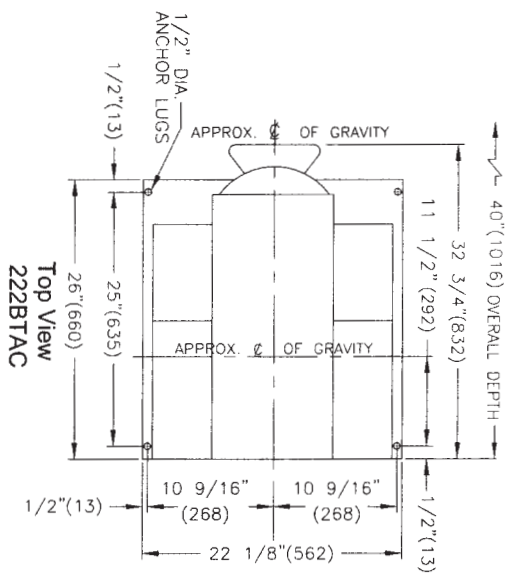
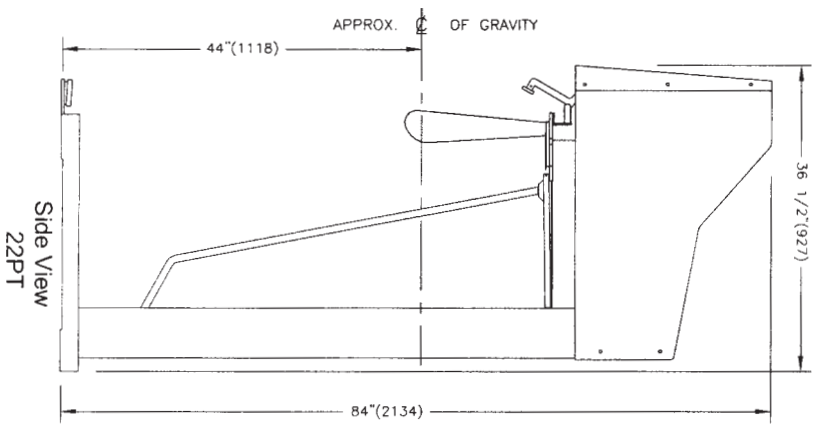
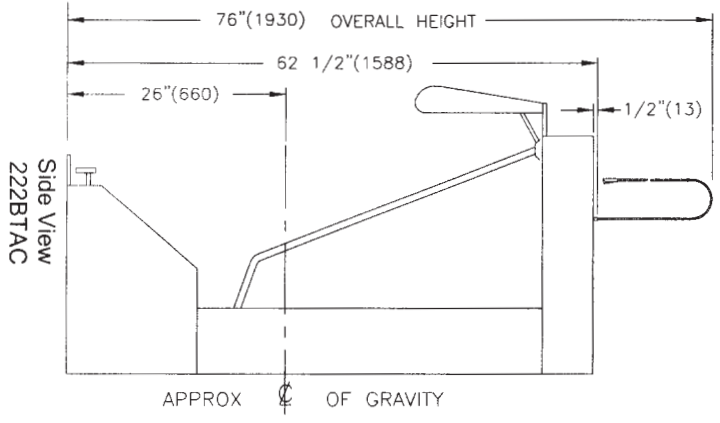
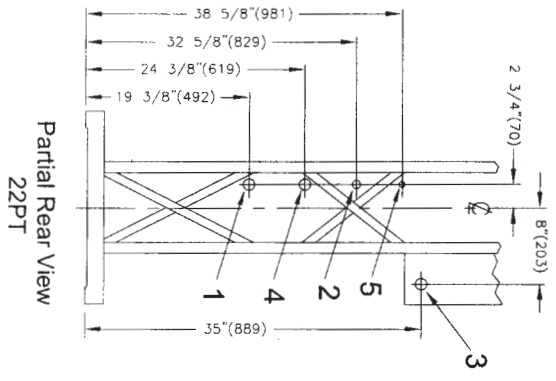
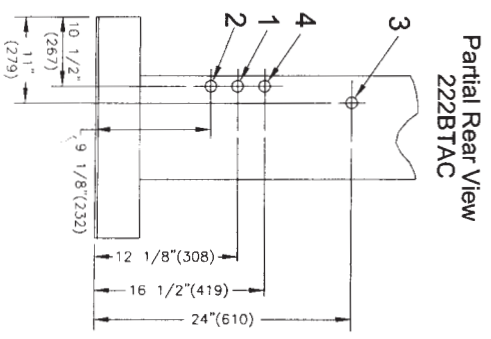
22PT

- Finishes Sizes 22" to 50" Pants
- Disappearing Pleat Shoes Clear for Operator Dressing
- Heated Buck, More Steam Penetration for Better Finishing
- Fully Automatic Electrical Control System – Simple, Easy Operation
- FORENTA Pants System Produces 60-70 Pants per Hour

# Specifications

## Models 22PT, 222BTAC

<b>Electrical connections</b>		22PT	222BTAC
120V 50/60Hz 1PH 8Amps		standard	standard
230V 50/60Hz 1PH 4Amps		optional	optional
<b>Steam and Air connection</b>			
Steam Inlet	NPT	1/2"	1/2"
Steam Outlet	NPT	1/2"	1/2"
Rec. steam pressure	PSIG	75-85	75-85
	KPa	517-586	517-586
Steam consumption	BHP	1	1
	kg/hr	15.6	15.6
Compressed air Inlet	NPT	3/8"	3/8"
Air consumption(per shift)	free air/cycle at 55psig	21 cu.ft	11 cu.ft
	free air/cycle at 379KPa	5.9 liters	3.1 liters
Rec. air pressure	PSIG	55	55
	KPa	379	379
Water Inlet	NPT	1/4"	-
<b>Weight (crated)</b>			
Shipping	lbs	370	253
	kg	168	115
1 Steam Outlet	3 Electrical connection		
2 Air connection	4 Steam Connection		5 Water Inlet



**Detail Line Drawing**  
(millimeters shown in parentheses)